

Members of the St Luke's Icon Centre meet weekly to paint and pray in the sacred context of St Laurence Church. We are learning about iconography ourselves, both in paint and stained glass. 'Icon' comes from the Greek word for 'image', and images are vital in communicating the Christian faith as well as opening doors into the spiritual world. This week is also an opportunity to open the doors of St Laurence to welcome others to come, linger awhile and see for themselves.

Icon Exhibition: Monday to Thursday 16-19th June

9.30 - 4 pm

Displays showing the different stages and materials used in icon painting.

Examples of icons painted by Iconographer Ian Knowles, Director of the Bethlehem Icon School, and members of St Luke's Icon Centre, Rowington, Warwickshire.

These exhibits will include some which were recently on display at Lichfield Cathedral.

Each day there will be a brief meditation at 12 00 pm.

3 day Taster in Iconography Monday-Wednesday **16-18th June 9.30 - 4 pm**

This is not a taught course but an experiential opportunity to come alongside existing members of the St Luke's Group. People can bring their own work or come and try some basic skills and techniques involved in painting an icon in a prayerful context. Materials and suggestions will be available. No experience is necessary, just a desire to explore prayer through painting.

Donation to cover refreshments and materials. Places limited.

To book a space contact Revd Susan Mobberley, email:
sumob@tiscali.co.uk

Thursday 19th June

9.30 - 4 pm

'Drop in and stay awhile'

A further opportunity for anybody to 'drop in' to the usual meeting of the Thursday St Luke's Icon Centre Group. A chance for people to come and see what is going on, ask questions, meet group members, and look at the exhibition. For those who don't want to come for the three days, people can dip into a painting session if they would like to, or just have a cup of coffee and meet others. Feel free to bring your sandwiches.

Lunchtime meditation 12.00 pm

'Taste and See'. 7.30 pm

A Celebration of Holy Communion for Corpus Christi.

Preacher: Archdeacon John Green, Coventry Diocese.

This service will take place in the context of the Icon Exhibition. Refreshments provided.

Saturday 21st June

Exhibition and Church Open 9.30 - 2 pm

10 am **'The Word made Paint'**
understanding Iconography
by Revd Susan Mobberley

11 am Coffee followed by

'The Word made Glass'

with particular reference to the windows at Rowington
by Aidan McRae Thomson, stained glass artist

Bread and Cheese lunch (donation to cover costs)

Also this weekend:

Saturday 21st June

Into the Outdoors - 'Gathering of the Waters'

Summer Solstice and Parish Picnic.

7.00pm start at Lowsonford Village Hall

Bring your own food and drinks.

Sunday 22nd June

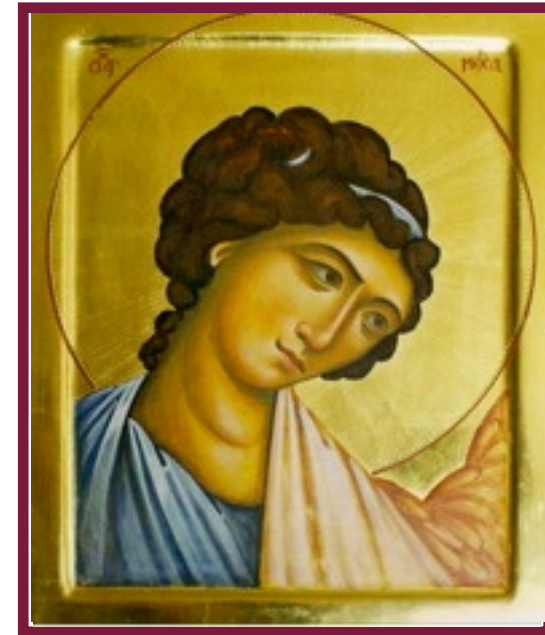
'Hymns and Pimms'

11.00am at St Laurence Church Rowington

This will include a buffet and drinks.

'Doorways'

*An opportunity to explore the
sacred art of iconography*



*St Laurence Church Rowington
16 - 22nd June 2014*

*'Let all the world in every corner sing, my God and King!
The church with psalms must shout.
No door can keep them out'*

George Herbert

*'Icons form a door into the divine realm, a meeting
point of divine grace and human need; moreover
they are also a way by which we enter more deeply
into our interior life' John Baggley 'Doors of Perception'*

